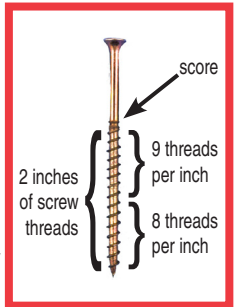


# SQUEEEEEK NO MORE® For Wood Floors



The tool and screws in the Squeeeek No More Kit for Wood Floors allow you to fasten down wood floors to stop the squeaks and secure hollow spots. The key to the system is the specially scored screw. It starts at the tip with 8 threads per inch. One inch up it switches to 9 threads per inch. This pitch change draws the board down as the screw descends into the flooring.



## STOP FLOOR SQUEAKS

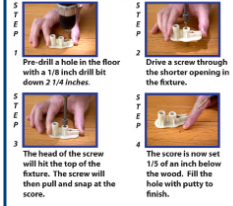
### SQUEEEEEK NO MORE®

#### For Wood Floors

- Quick and Easy Fastening System
- Works from above the floor
- Works on floors from 1/4" to 3/4" inch thick
- #8 screw looks like a trim nail that is counter-sunk
- Works on Hard and soft wood floors
- Pulls down and holds hollow spots secure

Squeeeek No More® uses a scored screw that has a variable pitch. It pulls the flooring tight to the sub-floor then snaps off 1/5 of an inch below the floor's surface.

#### Steps for Hardwood Floors



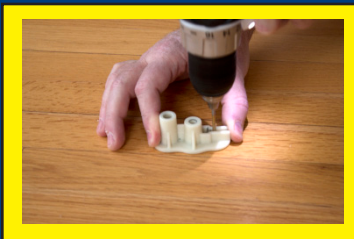
The tooling stops the screw at the point where the score on the screw is safely below the wood. The head of the screw will snap off automatically in hardwoods or manually in softwoods. Then 2 inches of screw threads will remain in the floor.

The result is a securely fastened board with a #8 screw that looks like a counter-sunk trim nail.

Scan the QR code with your smartphone to view a video demonstration of the product or go to [www.floorscrews.com/hardwood\\_floors](http://www.floorscrews.com/hardwood_floors)

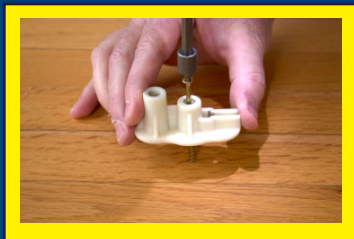


## STEPS FOR HARDWOOD FLOORS



### STEP 1

Using the hole in the fixture, pre-drill a hole in the floor with a 1/8 inch drill bit.



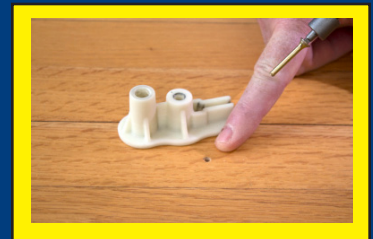
### STEP 2

Drive a screw through the shorter opening in the fixture.



### STEP 3

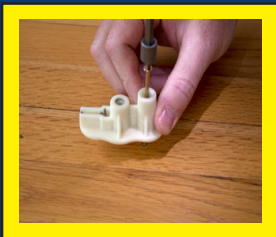
The head of the screw will hit the top of the fixture. The screw will then pull and snap at the score.



### STEP 4

The score is now set 1/5 of an inch below the wood. Fill the hole with putty to finish.

## STEPS FOR SOFTWOOD FLOORS



### STEP 1

After pre-drilling a hole in the floor, drive a screw through the taller opening in the fixture.



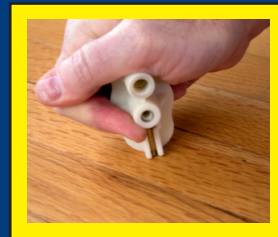
### STEP 2

Drive the screw down as far as the fixture will allow.



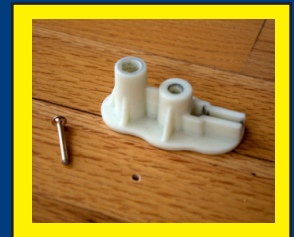
### STEP 3

Place the gripper portion of the fixture over the head of the screw.



### STEP 4

Rock the fixture back and forth until the head of the screw snaps at the score.



### STEP 5

The score is now set 1/5 of an inch below the wood. Fill the hole with putty to finish.